



INHALE NEWSLETTER

Newsletter Highlights

Accepting
Nominations:
Executive Committee

Health Equity Corner

Inhaler Education and
Tobacco Cessation
Toolkits

Admin Portal Updates

Updates & Reminders

Now Accepting Nominations Executive Committee

The INHALE Coordinating Center is seeking nominees for our Executive Committee!

Purpose: The INHALE Executive Committee will provide input and critical feedback to the INHALE Coordinating Center on aspects of the quality improvement process such as data, governance, regulatory decisions, and patient education and education initiatives.

Expectations: The Committee will meet quarterly for 1.5 hours, but may meet ad-hoc for urgent items. Meetings will be held via Zoom and an effort will be made to gather in person at Spring or Fall Regional Meetings. The first meeting is scheduled to take place in summer 2024.

Nomination Process:

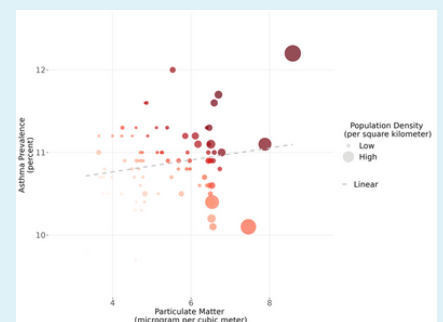
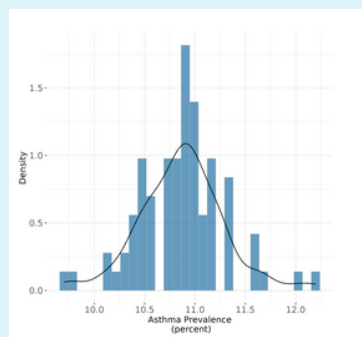
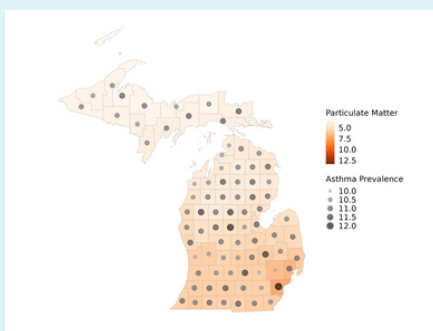
- Nominations will be accepted through March 31st, 2024.
- You may nominate yourself or a colleague to serve on this committee. Nominees will be notified.
- The committee will be encompassing of our participating specialties and regions across Michigan.
- Nominators will receive a bonus point towards VBR

[Click here to nominate!](#)

Asthma Equity Explorer Advances Asthma Research Into Disparities

The Asthma Equity Explorer is a free web-based database for asthma research. It provides information and insight on U.S. asthma prevalence based on social, economic and environmental factors that cause asthma. And it does so within the context of location and geography.

Explore more [here](#)



Toolkits

INHALE has worked to create two new toolkits that contains a variety of resources to assist providers in giving their patients the information they need to use their inhalers correctly and/or quit using tobacco.

These resources include:

- patient education materials
- formulary guides
- quitting tools
- resources to assess inhaler technique and much more!



We encourage you to browse the toolkits and see how it can help improve the quality of education for your patients! If you have a resource that you believe should be included in either toolkit, please email the INHALE coordinating center at inhale-support@med.umich.edu.

Inhaler Education Toolkit

This toolkit contains a variety of resources to assist providers in giving their patients the information they need to use their inhalers correctly. These resources include: patient education materials, formulary guides, tools to assess patient inhaler technique and much more. We encourage you to browse the tools and see how it can help improve the quality of inhaler education for your patients!

- INHALE Members: Inhaler education is currently being tracked as a performance measure; click to learn more about [VBR Requirements](#).
 - INHALE Members: To better understand how you're performing, view our [Data Dashboard](#) to get a snapshot of the inhaler education measure along with other measures that are being tracked for your practice.
 - If you're having trouble logging in or need to request an account for the Data Dashboard follow these [instructions](#).
- If you have a resource that should be included, please email the INHALE coordinating center at inhale-support@med.umich.edu

Provider Tools >

Visit Tools >

Billing Tools >

Patient Education Materials >

Patient Education Videos >

Inhaler Education Toolkit

Tobacco Cessation Toolkit

Tobacco Cessation Toolkit

This toolkit contains a variety of resources to assist providers in giving their patients the information they need to quit using tobacco. We encourage you to browse the tools and see how it can help improve the quality of tobacco cessation for your patients. Additionally, our partner CQI, Health Behaviors of Michigan (HBOM), have an in depth resource library for all things tobacco cessation.

- INHALE Members: Tobacco cessation is being tracked as a performance measure; click to learn more about [VBR Requirements](#).
- INHALE Members: To better understand how you're performing, view our [Data Dashboard](#) to get a snapshot of the tobacco cessation measure along with other measures that are being tracked for your practice.
 - If you're having trouble logging in or need to request an account for the Data Dashboard follow these [instructions](#).

If you have a resource that should be included, please email the INHALE coordinating center at inhale-support@med.umich.edu.

Provider Tools >

Visit Tools >

Billing Tools >

Admin Portal Updates

Admin Dashboard

How to use the admin dashboard:

The number in **green** is the total number of your tasks of that type.

The number in **red** is the number of incomplete tasks of that type.

For example, if you have 3 tasks of a certain type, and 2 of them are complete, you v

If you complete all your tasks, you will see **0 / 3** in the top middle of the card.


To view incomplete tasks of a task type, click the **red** number.

To view all tasks of a task type, click the **green** number.

INHALE Task Summaries

Quickly view your progress towards INHALE VBR related tasks on the Admin Dashboard

Access the admin portal today!

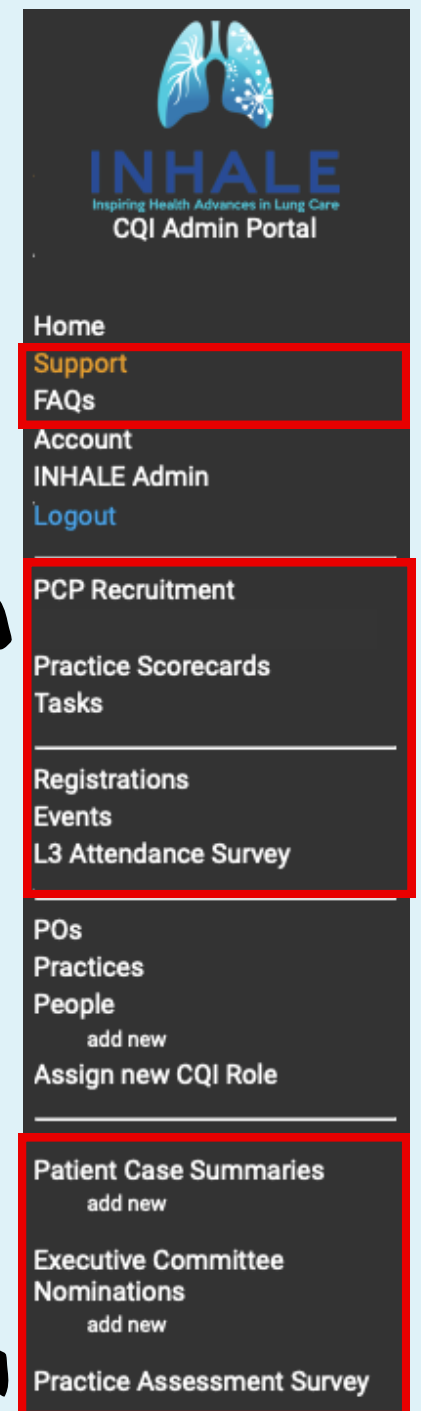


Having trouble navigating the admin portal? Submit a Support ticket or review the FAQs for possible solutions.

Access recruitment, scorecards, task overviews, events and registrations for your practices all in one place!

New Forms

1. Patient case summaries - This form is meant to be completed by providers participating in INHALE to report a patient case. Successfully completing this form contributes towards bonus points for VBR.
 2. Executive Committee Nominations - a form to nominate yourself or someone you know who might be interested in joining this committee. By completing the form, you will earn bonus points towards VBR.
 3. Practice Assessment Survey - this survey is a practice level requirement for VBR. It includes questions regarding your practice, INHALE, as well as the INHALE initiatives.
- All of these forms can be accessed without having an admin portal account and specific links to them can be shared with practices or providers who wish to complete them.



Updates & Reminders

SAVE THE DATE

PO Monthly Phone Call

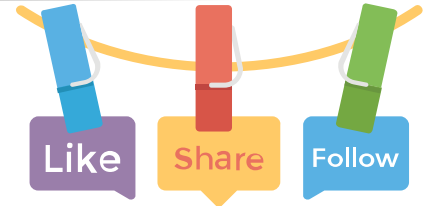
- April 8th @ 11:00am
- April 10th @ 2:00pm
- May 8th @ 2:00pm
- May 13th @ 11:00am
- June 10th @ 11:00am
- June 12th @ 2:00pm

Spring Regional Meetings - 6:00pm-8:00pm

- May 7th - Virtual
- May 14th - Virtual
- May 15th - Virtual

Collaborative Wide Meeting

- June 7th - time to be determined
- Lansing Community College
 - 5708 Cornerstone Dr, Lansing Mi 48917



Be sure to follow INHALE on social media!



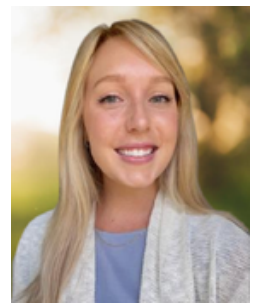
BE IN THE KNOW !!

Did you know that INHALE recently launched a clinical version of their newsletter? Sign up on our website to receive the latest asthma and COPD news!

[Subscribe](#)



This month, for International Women's Day, we'd like to acknowledge the talented women who make up the Coordinating Team for INHALE!



Top left: Dr. Njira Lugogo
Bottom left: April Proudlock and Karla Stoermer Grossman
Top right: Dawn Zinsser and Brenna Dressler
Bottom right: Meghan Spiroff and Kelly Shelton