

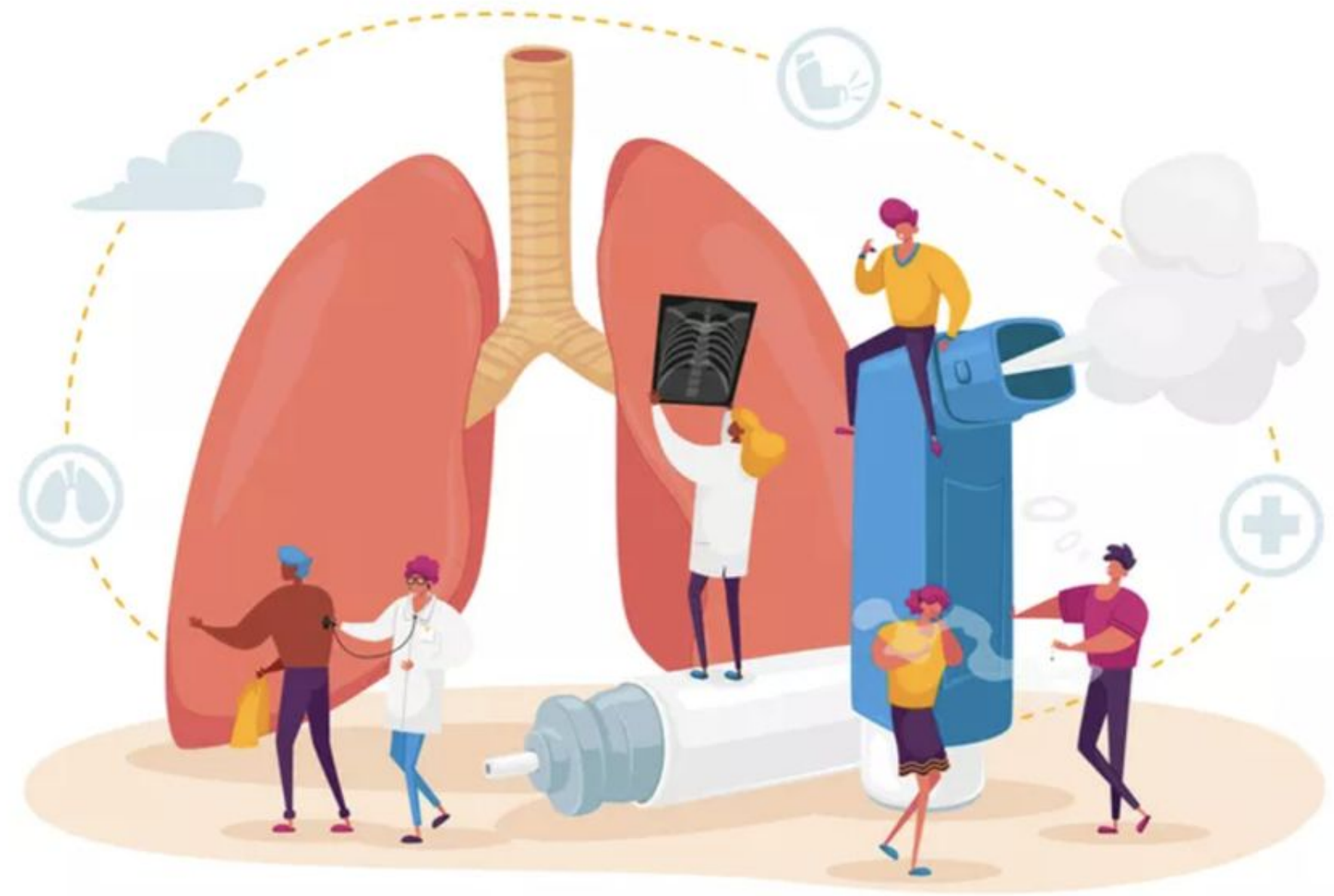


INHALE

Inspiring Health Advances in Lung Care

Agenda

- Announcements & Updates
- Patient Advisory Board
- Measures & Data Hub
- PO & Practice Updates
- Portals & Website
- Upcoming Events & Important Dates
- Questions/Discussion



Announcements & Updates



- **Staff Updates:**

- Welcome to April Proudlock! Our new Program Manager!
- Karla is going to be out on medical starting October 6th. Meghan will be covering her email. Please continue to email questions/issues to Karla@inhalecqi.org

- **Reminders:**

- Regional Meetings: our meeting locations are FULL! All registrations should be submitted already!
- Resource Bags are still available- one per practice please!
 - Shipping timing is dependent on supplies
 - Contact Karla@inhalecqi.org or contact@inhalecqi.org to request resource bags for your practices.
- Education Workgroup Meetings
 - Every other Monday, 4:00-5:00pm
 - Please contact Brenna at bdressle@med.umich.edu to get the meeting link

INHALE Patient Advisory Board

- We are still working to recruit for our 15 member Patient Advisory Board with patients who have asthma, COPD, or are a caregiver of a pediatric asthma patient or patient with asthma or COPD
- Information sessions are being held:
 - September 27th from 6-7pm OR
 - September 29th from 12-1pm
- An email from Meghan Spiroff with a flyer and registration links for the sessions was sent on 8/24 and 9/6/23.
- Please share with email and flyer with your practices!
- Email Meghan with any additional questions: mairgood@med.umich.edu



Data Hub Updates



Michigan Data
Collaborative

Enhancement Release 3: September 6, 2023

- Refreshed medical & pharmacy claims through the end of May 30, 2023
- New: Specialists added!
 - Allergists, Pediatric Pulmonologists, Adult Pulmonologists
 - Increase of over 20K patients
- Updates:
 - Last fill date added:
 - SABA Fills Measure
 - OCS Fills Measure
 - Added supporting documentation to better define denominators for each measures

PO & Practice Updates

PO Scorecard:

https://docs.google.com/spreadsheets/d/1ZXYjDGLFVCa-76cL_6C6ibJg2ixuwFZ8/edit?usp=sharing&ouid=110032612850866110123&rtpof=true&sd=true

2023-24 PCP Participation Requirements:

- Measurement period: 9/1/2023-8/31/2024
- Link to document: https://drive.google.com/file/d/1i_XYJge880tkspKDS2f0ghZzkTr2jxxF/view?usp=sharing
 - Details:
 - Participate in INHALEarning Module: Inhaled Medications
 - Attend Regional meetings: Spring and Fall
 - Attend one Speaker Series event
 - Complete the Practice Resource Assessment Survey
 - Bonus points available
 - Must earn a minimum of 9 points



PO & Practice Recruitment

Next recruitment period for Specialists: Allergy, Ped Pulm, Pulm

- SCP recruitment opens **October 1, 2023**
- SCP Agreements due to INHALE by **December 1, 2023**
- Participation VBR for new practices/providers will start **March 1, 2024**
- Remember to add the new providers in the Admin Portal
- Specialist Participation Requirements will be shared soon

NOTE: these dates may shift in response to BCBSM requests

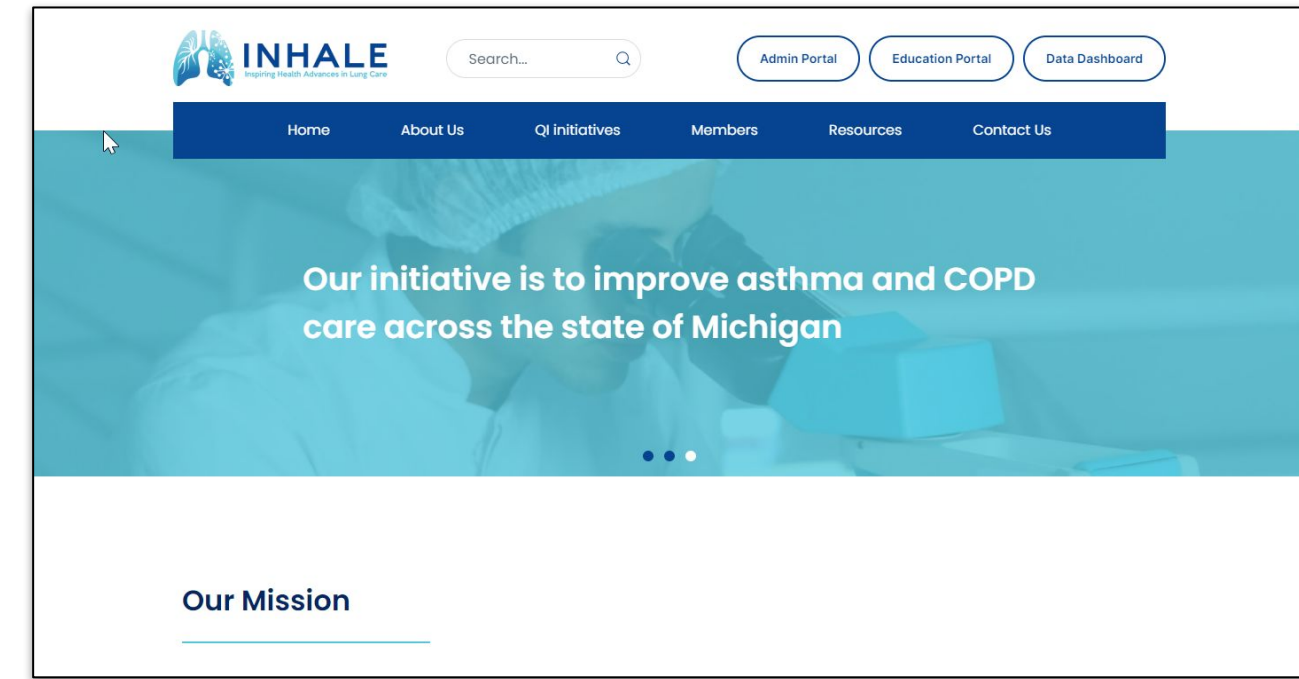


Portals & Website

- **Administration Portal Upgrade:**

- Creating a reporting system for the Participation Requirements.
 - Based on MCT2D reporting forms
 - Any feedback?
- Make sure that your PO team information is correct and complete
- Check the PO Scorecard for the reporting requirements
 - PO Scorecard:

https://docs.google.com/spreadsheets/d/1ZXYjDGLFVCa-76cL_6C6ibJg2ixuwFZ8/edit?usp=sharing&ouid=110032612850866110123&rtpof=true&sd=true



Upcoming Events & Important Dates



Regional Meeting Dates:

- Tuesday September 26, 2023 from 6:00-8:00PM- **Ann Arbor, MI**
- Thursday September 28, 2023 from 6:00-8:00PM- **Grand Rapids, MI**
- Tuesday October 3, 2023 from 6:00-8:00PM- **Grand Blanc, MI**
- Thursday October 5, 2023 from 6:00-8:00PM- **Rochester Hills, MI**

Agendas: <https://drive.google.com/file/d/11FZPzYnEHtOaXF4ey7ESUK2BBrG1Zgij/view?usp=sharing>

Next Monthly Call Dates:

- October 9th at 11:00 **or**
- October 11th at 2:00

Proposed: 2024 Spring Regional meetings: May 1, 7, 8, 14, 15

2024 Summer Collaborative-wide: June 7, 2024 in Lansing

Questions/Discussion



CONTACT US

www.inhalecqi.org

For questions related to the measures, definitions, or INHALE in general please contact the coordinating center:

contact@inhalecqi.org

For technical support with the data hub or access concerns please reach out to MDC.

MichiganDataCollaborative@med.umich.edu

