



INHALE

Inspiring Health Advances in Lung Care

Monthly PO Update

12/11/23 & 12/13/23

Agenda

- Announcements & Updates
- MTI
- Learning Lung Labs
- VBR Timeline Updated
- Ask the Pharmacist
- 2024 PO Recruitment
- Admin Portal
- Website Updates
- BCBSM Survey
- Upcoming Events & Important Dates
- Questions/Discussion



Announcements & Updates

- Coordinating Center will be closed from Dec 25th until Jan 2nd
- Resource bags shipping update:
 - McLaren – Shipped 12/6
 - IHP – Shipped 12/6
 - UMMG – Confirmed delivery of 12/11
 - Requests from the Rochester Regional will be filled as soon as supplies are received – pending supply arrival



MTI Pilot Program Interest

- Information Session Recap and Reminders
 - Recruitment will remain open through Q2 of 2024: If interested, please have the practices complete the Site Profile

Questionnaire: <https://forms.office.com/Pages/DesignPageV2.aspx?subpage=design&FormId=DG9fxFNwIkuqpHnN1klpFI-xAbEFjq5Cqs8nNgU1rcxUNEtFMExPREY5RU1VTUwyRzk3TzZJWk1QVS4u&Token=0620179d3ff6476182e82a3210b6a754>

Proposed Pilot 2024

INHALE Initiative Focus

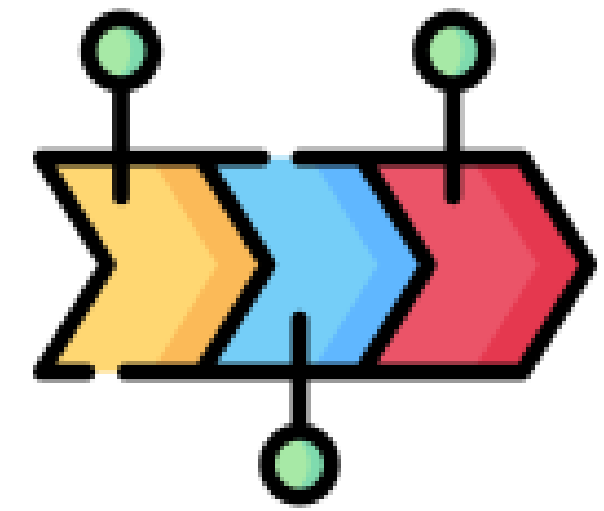


Spirometry

Improving access to and the appropriate use of spirometry as a tool to accurately diagnose both Asthma and COPD



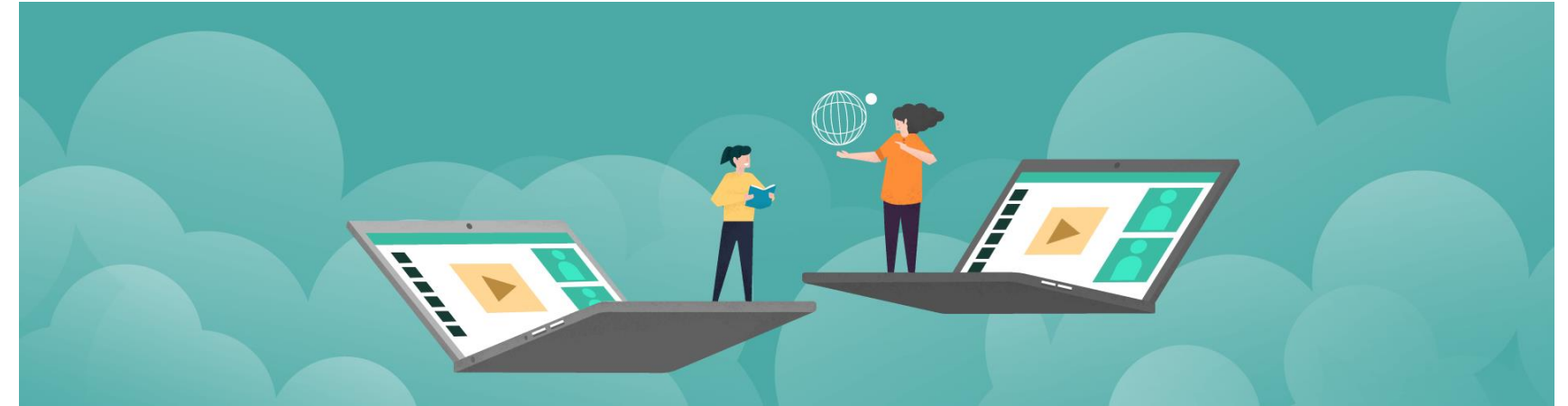
VBR Timeline Updates



- Request from BCBSM to update VBR Timeline
- For 2025 VBR:
 - **Measurement Period: 1/1/2024 - 8/31/2024**
 - **Reimbursement Period:**
 - SCPs: 3/1/2025-2/28/2026
 - PCPs: 9/1/2025 - 8/31/2026
- For 2026 (and beyond) VBR
 - **Measurement Period: 9/1/2024 - 8/31/2025**
 - **Reimbursement Period:**
 - SCPs: 3/1/2026 - 2/28/2027
 - PCPs: 9/1/2026 - 8/31/2027
- More equitable payment timeline - SCPs previously had a 15-month lag for reimbursement
- Will honor those participation VBR activities that were completed prior to 1/1/24 towards the 2025 VBR
- Alignment of PCP and SCP measure timeline reduces administrative burden on INHALE and BCBSM and makes it easier for POs to track

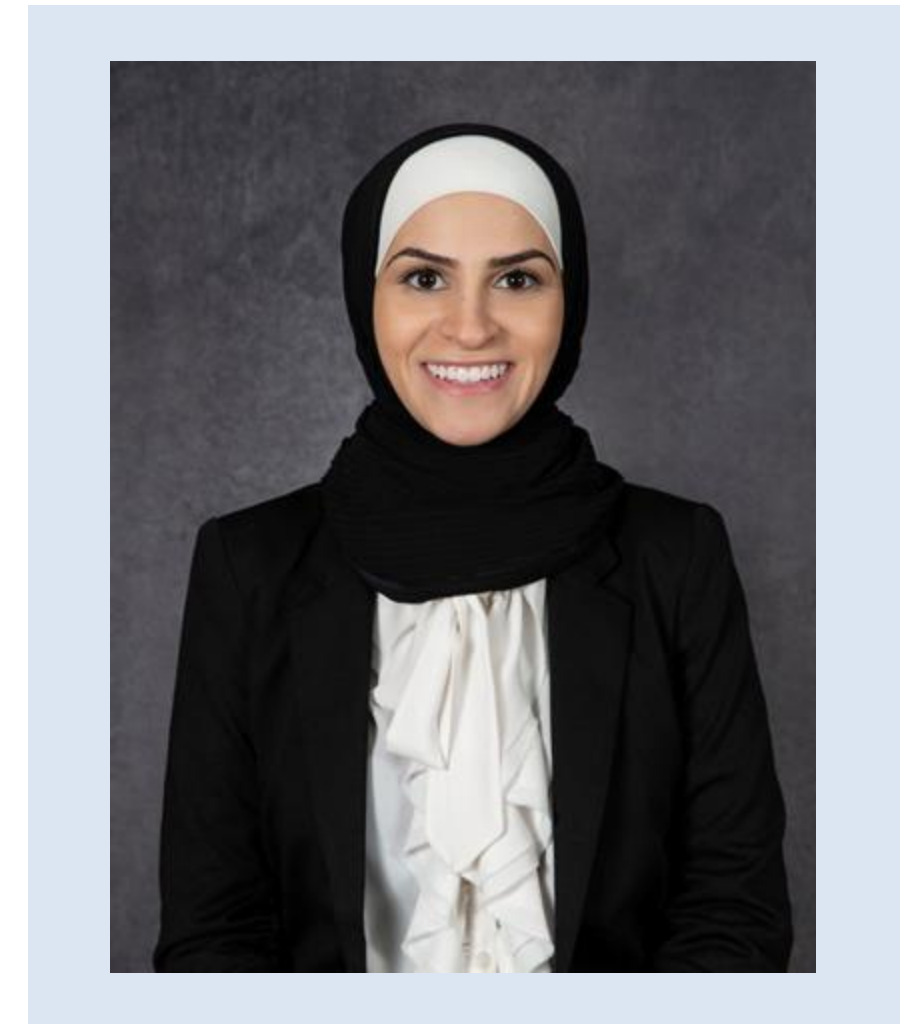
Lung Learning Labs - L3

- Monthly from Jan 2024 to April 2024
 - Registration will open in December 2023
- Clinical Champions and all participating physicians must attend 1 session for VBR
- CME will be awarded
- Topics include:
 - Jan 18 @ 12:00p - Dr. Ohar (Wake Forest Health) - Updates in COPD
 - Feb 22 @ 12:00p - Dr. Lugogo (Michigan Medicine) - Biologics
 - March 14 @ 12:00p - Dr. Wahidi (Northwestern University) - Lung Volume Reduction
 - April 11 @ 12:00p - Dr. Saba (Michigan Medicine) - Spirometry Interpretation in Primary Care
- Sessions will be recorded for those that cannot attend and CME is enduring



Ask the Pharmacist

- INHALE is partnering with MiCMT to provide this service to practices and POs participating in the INHALE CQI
- Providers allowed 2 one-on-one sessions/month
- Explore clinical scenarios and answer patient specific clinical questions (note: PHI **not** permitted)
- Nada can provide resources specific to your practice
- Visit INHALECQI.org / Ask the Pharmacist button



PO Recruitment

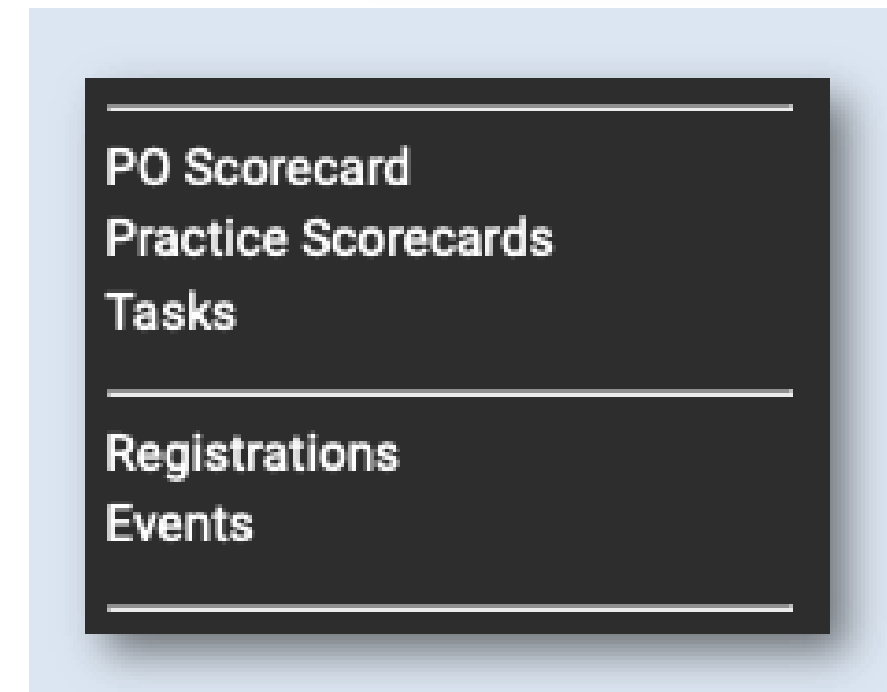
Next PO Recruitment will open February

- INHALE intends to recruit 3 new POs
- Information session is **February 1, 2024, 11a -12p**



Admin Portal

- Improvements are being made to the INHALE admin portal
 - Scorecards and forms necessary to satisfy the requirements for VBR are being built
 - Announcements will be sent out when these forms are ready for your use
- Lung Learning Lab (L3) registration – opening in December
 - Attendees must pre-register for the virtual event
 - After a session is attended: fill out the survey to mark it completed in the portal and claim your CME credit through the Beaumont portal
 - If a recorded lab is watched on the INHALEarning platform, viewers must still fill out the admin portal survey to mark the requirement complete and can claim enduring material CME credit through Beaumont



Website Updates

Many upgrades to the Resource Library

- new sorting features
- a bookmark option to save your frequently used resources
- table and grid views
- featured photo of each resource

Quickly access our INHALE newsletters and the latest internal or external organization events

Request a resource bag through the Members section of the website



Request A Resource Bag

View featured INHALE developed videos and access our YouTube video library from the homepage.

Announcements section on the homepage

Ask the Pharmacist and Contact Us buttons

BCBSM 4 Question Survey



- Qualtrics Survey will be emailed right after today's meeting
- Composed of a total of 4 questions: (strongly agree to strongly disagree)
 - I find value in the INHALE CQI
 - The INHALE Coordinating Center is a trusted partner
 - Our site can only participate in INHALE with financial support from BCBSM/BCN
 - BCBSM/BCN has been a reliable partner in the INHALE CQI quality effort
- Should take < 5 minutes to answer
- **Please respond by December 20th**

Upcoming Events & Important Dates

Next Monthly Call Dates:

- Jan 8th(April) at 11:00a **or** Jan 10(Sean) at 2p

Lung Learning Labs series: Jan - April

2024 Summer Collaborative-wide: June 7, 2024, in Lansing

Proposed: 2024 Spring Regional meetings: May 1, 7, 8, 14, 15

MOC Project - Inhaler Education

- Spring 2024 - more details to come soon



Questions/Discussion



CONTACT US

www.inhalecqi.org

For questions related to the measures, definitions, or INHALE in general please contact the coordinating center:

INHALE-support@med.umich.edu

For technical support with the data hub or access concerns please reach out to MDC.

MichiganDataCollaborative@med.umich.edu

