

# Inspiring Health Advances in Lung Care (INHALE)

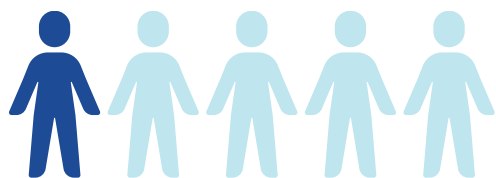
## Who We are

The Inspiring Health Advances in Lung Care (INHALE) collaborative aims to improve patient outcomes, promote best practices, close gaps in care, and champion high-value healthcare for all asthma and COPD patients in Michigan.

### Why Asthma and COPD?

- Michigan has some of the **highest prevalence rates of asthma (11.2%) and COPD (8.9%)** in the U.S. and continues to have **significant disparities** in the burden of disease.
- The economic burden of asthma in MI is estimated at approximately **\$3 billion** per year, driven by emergency department visits, hospitalizations, readmissions, and loss of productivity.

#### Patient Impact



Combined, asthma and COPD affect **1 in 5** Michiganders



COPD is the **3rd leading cause of death** by disease in the U.S.



"My asthma affects every part of my daily life. From where I can go...to what I can and can't do physically."



### What Will We Focus On?



#### Championing Optimal Health for All

Increase focus on social influences of health to close gaps in care and improve the health of all groups



#### Advancing Therapeutic Optimization

Reduce reliance on inappropriate and harmful medications, promote pulmonary rehabilitation, and ensure appropriate biologic prescribing



#### Promoting Transformative Education

Empower healthcare providers and organizations through continued education, best practice sharing, and partnership building



#### Delivering Operational Excellence

Strengthen existing processes and structures to improve the overall efficiency and impact of collaborative activity

## Opportunities for Collaboration

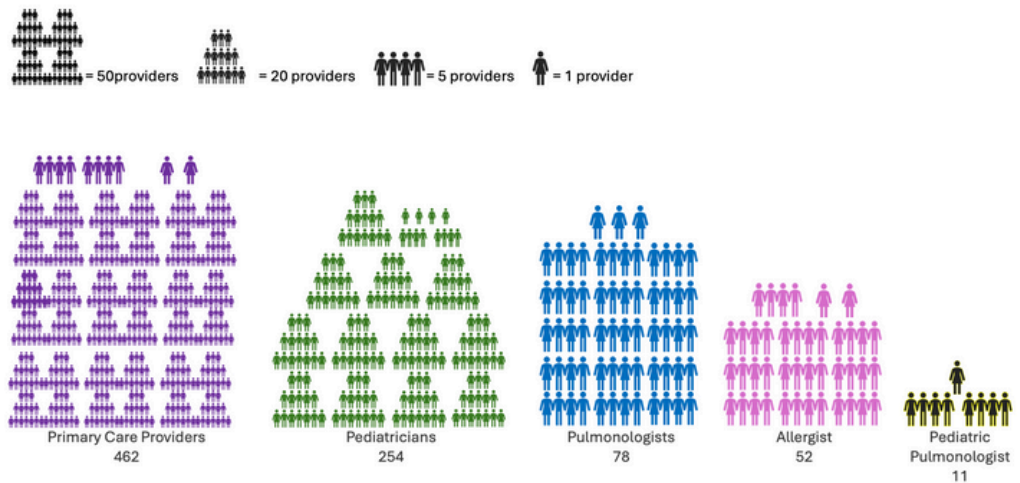


By partnering with the INHALE collaborative, you will be joining a team dedicated to advancing care for individuals with asthma and COPD. Together we will achieve:

- ↑ Increased accuracy of asthma and COPD diagnosis
- ↓ Decreased unnecessary healthcare utilization
- ↓ Potential decreased cost of care
- ↑ Improved patient quality of life
- ↑ Increased quality performance
- ↑ Increased education of latest guidelines

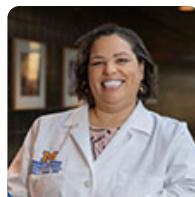
### Among INHALE's 18 participating POs there are:

- 462 Primary Care Providers
- 254 Pediatricians
- 78 Pulmonologists
- 52 Allergists
- 11 Pediatric Pulmonologists



### Meet the INHALE Team!

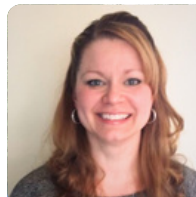
The INHALE team has rich expertise in asthma, COPD, quality improvement, and data analytics.



Njira Lugogo, MD  
Program Director



Michael Sjoding, MD  
Program Co-Director



April Proudlock  
Program Manager



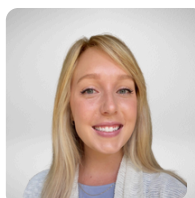
Carrie Miller  
QI Specialist



Karla Stoermer Grossman  
Site Coordinator



Kelly Shelton  
Admin Assistant



Brenna Dressler  
Project Manager



Meghan Spiroff  
Strategic Partnership &  
Engagement Specialist



Raul Desiderio  
Database  
Analyst/Programmer



[inhale-support@med.umich.edu](mailto:inhale-support@med.umich.edu)



[inhalecqi.org](http://inhalecqi.org)