



Project ECHO

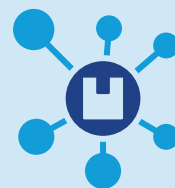
With INHALE

What is an ECHO?

ECHO stands for Extension for Community Healthcare Outcomes – a learning model established in 2003 aimed at disseminating specialized knowledge and sharing best practices, support, guidance, and feedback with peers.

At ECHO's with INHALE, we will focus on:

- Improving patient health outcomes with direct care access
- Access to specialists to consult on complex cases
- Sharing best practices within the INHALE Collaborative



WHAT DOES AN ECHO SESSION LOOK LIKE?



Participants benefit from case-based guidance provided by specialists and content experts, while collaborating with fellow INHALE providers to learn, share, and implement best practices.

Join us for a 60 minute virtual sharing session each month!

Join us for INHALE ECHO Sessions

All sessions will take place from 12:00pm–1:00pm

- March 26th, 2026
- April 30th, 2026
- May 28th, 2026
- June 25th, 2026
- July 23rd, 2026
- August 27th, 2026
- September 17th, 2026
- October 29th, 2026
- November 19th, 2026
- December 17th, 2026

Email us at INHALE-Support@med.umich.edu to sign up to be an expert or submit a case

Project ECHO case consultations do not create or otherwise establish a provider-patient relationship between any INHALE clinician and any patient whose case is being presented in a Project ECHO setting.