



# INHALE

## Monthly PO Update

1/12/26 & 1/14/26



# Agenda



- Announcements & Reminders
- Data Dashboard Release Schedule
- 2026 Meeting Schedule
- 2026 INHALE Recruitment Update
- Duo to Okta Switch
- Lung Learning Labs
- New Patient Toolkits
- ECHO
- Committee Recruitment



# Announcements & Reminders



## Next PO Monthly Calls

February 9th, 2026 @ 11am  
February 11th, 2026 @ 2pm



## 2026 VBR Data Release Jan 8th

Calculating SCP VBR  
BCBSM will run file for SCP  
eligibility criteria



## PO 1:1's

Scheduled as needed with  
Coordinating Center  
Contact @ [INHALE-  
support@med.umich.edu](mailto:INHALE-support@med.umich.edu)



# 2026 Meetings – Mark your calendars!



## Spring Regional Meetings

- Monday, March 2nd
- Tuesday, March 10th
- Wednesday, March 18th
- Thursday, March 26th – SCP focused meeting

Meetings will be *virtual* from 6:00pm-8:00pm

Each practice's clinical champion must attend one session to receive VBR credit.

## Collaborative Wide Meeting

- Thursday, June 4th 8a - 3p

Meeting will be *in-person* at Lansing Community College

PO Clinical Champion and PO Admin attendance required for credit.

# 2026 INHALE Recruitment



- No recruitment will occur in 2026 at the request of BCBSM
- This is to allow POs to focus on the PCMH restructuring/alignment
- Recruitment is expected to resume in 2027, dependent on BCBSM



# Duo to Okta Verify Switch



Okta Verify

Business

Free

Share

37K RATINGS

4.8

★★★★★

AGES

4+

Years

CATEGORY



Business

DEVELOPER



Okta, Inc.

- MDC will be moving from Duo two-factor authentication to Okta.
- Enrollment for Okta Verify will begin in mid-January.
- Duo as MFA solution will be retired 2/25/26.

# Okta Verify Enrollment

## Transition of Duo Multi-factor Authentication to Okta Verify

### How to Enroll in the Okta Verify app

#### Step 1

Visit the app store for your device and download the Okta Verify app for iOS or Android

Download on the App Store

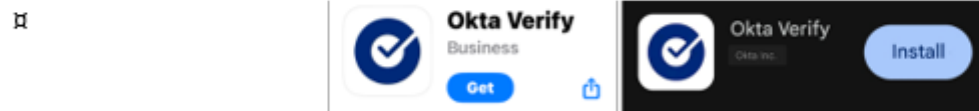


Get it on Google Play



Ensure your device is a supported platform for Okta Verify

Alternatively, if you are unable to scan a QR code to enroll, open the app store on your mobile device, search for Okta Verify, and install the app.



#### Step 2

After downloading the app, finish by enrolling your UMICH account in Okta

Enroll your UMICH account

View step-by-step instructions on how to complete the enrollment process

### Choose from new authentication features

#### Step 3

After enrolling with Okta, select one of the following methods to verify your identity and access your account

		
Optional Biometrics	Context-Based Authentication	Passwordless Sign-In Option

### More information

- [Okta Verify at U-M | U-M Information and Technology Services](#)
- [Information Assurance: Okta Verify MFA SharePoint site](#)
- [Enroll in Okta; Get help enrolling with Okta](#)
- For questions, contact [MM-Okta-MFA-Questions@med.umich.edu](mailto:MM-Okta-MFA-Questions@med.umich.edu)

# Lung Learning Labs – Registration Open



**1/20/2026 12:00pm-1:00pm**

- Speaker: Dr. Nicola Hanani
- Biologics in COPD: Who, When & Why

**2/10/2026 12:00pm-1:00p**

- Speaker: Dr. Theresa Guilbert
- Preschool Wheezing

**4/23/2026 12:00pm-1:00pm**

- Speaker: Dr. Giselle Mosnaim
- Digital inhalers and their impact on Asthma

**5/19/2026 12:00pm – 1:00pm**

- Speaker: Dr. Sara Ellingwood
- The role of allergic sensitization, mitigation strategies, and immunotherapy in Asthma.

**6/16/2026 12:00pm-1:00pm**

- Speaker: Dr. William Anderson
- The management of Asthma in school age children

**7/9/2026 12:00p-1:00pm**

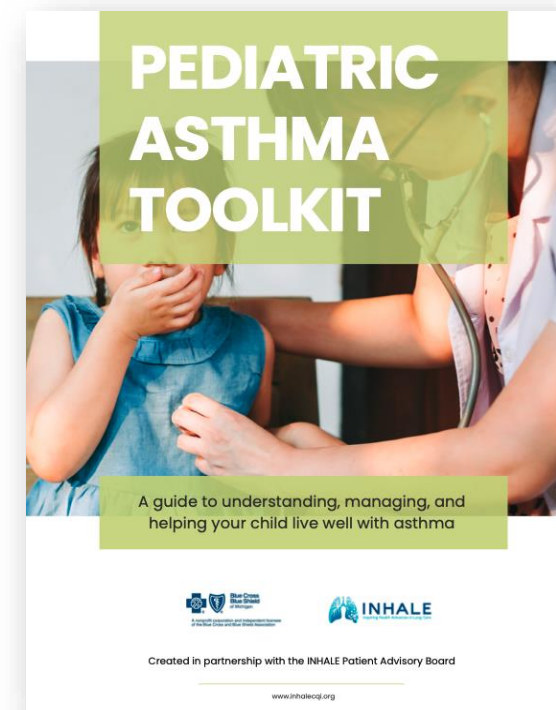
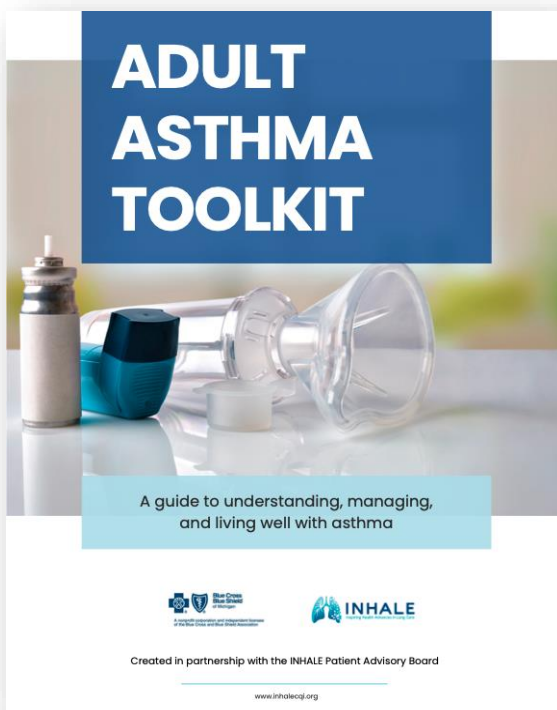
- Speaker: Dr. Stephanie Christenson
- Type 2 inflammation in COPD

**Registration open in  
the Admin Portal**

# NEW Patient Toolkits



INHALE has developed three patient toolkits in close partnership with our Patient Advisory Board, ensuring the resources are patient-centered, accessible, and grounded in lived experience to better support education, self-management, and shared decision-making. They can be found in the [Toolkits](#) section of the INHALE website.





# ECHO

## Extension for Community Healthcare Outcomes



Nonprofit corporations and independent licensees  
of the Blue Cross and Blue Shield Association

# Project ECHO: Who, What, Where, When, Why

**WHO:** Experts willing to share knowledge.

**AND**

Providers wanting advice/guidance on how to improve patient outcomes.

**WHAT:** An opportunity to present a patient case (without PHI) to get expert input, effectively extending specialist knowledge to underserved communities to improve access and patient care.

**WHERE:** Virtually via Zoom

**WHEN:** Piloting monthly beginning in March 2026

**WHY:** Improve patient outcomes and healthcare access by extending expertise beyond subspecialty care.

**HOW:** To nominate a Physician Expert: [INHALE-support@med.umich.edu](mailto:INHALE-support@med.umich.edu)  
To submit a Case Review: [INHALE-support@med.umich.edu](mailto:INHALE-support@med.umich.edu)

# Project ECHO: What is it?



# Project ECHO: Next Steps



**INHALE ECHO Purpose:** Empower providers through education and case support for INHALE participants who are caring for asthma and COPD patients.

## How we achieve this:

- Connect virtually via Zoom
- Provide education and educational resources
- Discuss provider needs
- Review and analyze cases
- Share recommendations and best practices

## Typical Agenda for an ECHO Session:

10 minutes: Introduction & announcements

20 minutes: Case presentation and discussion with Q&A

20 minutes: Case presentation and discussion with Q&A

10 minutes: Case Summary/Discussion/Sharing of best practices

# Project ECHO: Content Experts and Cases Needed



**Call for INHALE ECHO Content Experts:** Recruiting physicians to serve as content experts for the INHALE ECHO's.

## **Ideal Experts:**

- Allergists
- Pediatric Pulmonologists
- Pulmonologists

## **Expectations of experts:**

- Provide guidance and recommendations
- Commit to 4 pilot sessions
- Disclose any conflicts of interest

Will we offer VBR? Yes – we are offering this as a 10 point bonus activity on the scorecard \*SCORECARD UPDATE FORTHCOMING\*

# Project ECHO: Content Experts and Cases Needed



**Call for INHALE ECHO Case Submissions:** We are seeking cases for the INHALE ECHOs!

**Can submit cases through a secure form that are:**

- Difficult to treat
- Medication change questions
- Need access to specialist care quickly
- Need access to a community of learning and support
  - Please remember to deidentify all imaging and information submitted

**During the session:**

- Receive support from specialists and/or peers
- Receive Radiology support – we plan to have a Radiologist available to review imaging

**After the session:**

- Receive summary of discussion and next steps

Will we offer VBR? Yes – if the case is selected, the provider will receive 5 bonus points on the scorecard \*SCORECARD UPDATE FORTHCOMING\*

# Project ECHO: Additional Information/Questions



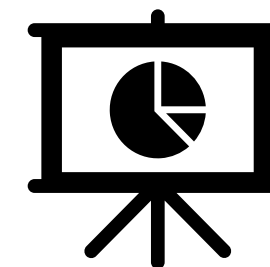
- We will be updating our website and Admin Portal in the next month with additional information!
- Questions?

# Data and Publications Committee

## What is the INHALE Data and Publications Committee?

The INHALE Data and Publications Committee is responsible for:

- Reviewing, guiding, and approving plans for data analysis and dissemination
- Evaluates the feasibility and validity of proposals, ensuring the integrity and accuracy of publications using INHALE data
- Promotes consistent authorship standards when multiple contributors are involved



**For more information about the Data and Pubs  
Committee scan the QR code or email us at  
[inhale-support@med.umich.edu](mailto:inhale-support@med.umich.edu)**

# Patient Advisory Board (PAB)



## What is the INHALE Patient Advisory Board?

The INHALE PAB is a group of 8 advisors who:

- Bring the patient voice to INHALE's work
- Give input and create educational resources and tools for patients
- Work with the community to help people understand how to best take care of their lungs
- Brainstorm ideas for improvement to care
- The PAB meets on Zoom (virtually) every other month
- Members are paid for their time

**Please have interested patients contact us at the form on our website or email us:**  
**[inhale-support@med.umich.edu](mailto:inhale-support@med.umich.edu)**

**We are looking for new members!**

Scan below for more information



**Remember a nomination is a 5-point bonus activity for VBR!**

# Questions





[INHALE-support@med.umich.edu](mailto:INHALE-support@med.umich.edu)



[www.inhalecqi.org](http://www.inhalecqi.org)



[@INHALE\\_cqi](https://www.instagram.com/INHALE_cqi)



[@inhale-cqi.bsky.social](https://bsky.app/profile/inhale-cqi.bsky.social)



[MichiganDataCollaborative@med.umich.edu](mailto:MichiganDataCollaborative@med.umich.edu)

Technical support with data hub or access concerns