



INHALE

CLINICAL NEWSLETTER

Newsletter Highlights

VBR Deadline 8/31/25

2027 VBR Scorecards

Admin Portal Access Expansion

Inhaler Education and Tools Highlight

PAB Highlight

Lung Learning Lab Recordings

Fall Regional Meeting Registration Reminders

AirDuo RespiClick Discontinued

Health Equity Corner

2026 VBR Deadline 8/31/25

The 2026 VBR cycle is ending **8/31/25**. Check progress on your scorecard activities by reaching out to your Physician Organization (PO) Clinical Champion or PO Administrator.

[Click here](#) to view Primary Care and Specialty Care Provider 2026 scorecards.

Data through the end of the measurement year will be available on **November 19th, 2025**.

2027 VBR Scorecards

The new measurement year (participation and performance) for 2027 VBR will begin **9/1/2025** and end **8/31/2026**.

[Click here](#) to view Primary Care and Specialty Care Provider 2027 scorecards.



INHALE Administrative Portal Access Expanded



Practice Clinical Champions and Practice Liaisons now have access to the INHALE Administrative Portal. If you are a Practice Clinical Champion or Practice Liaison and have questions about the portal, please review our [Administrative Portal User Guide](#) or reach out to our team at INHALE-Support@med.umich.edu with any questions.

Tools Highlight The Critical Role of Inhaler Education in Asthma and COPD Management

Why It Matters Inhaled therapies are key for asthma and COPD — but **poor technique** can reduce effectiveness and lead to worse outcomes.



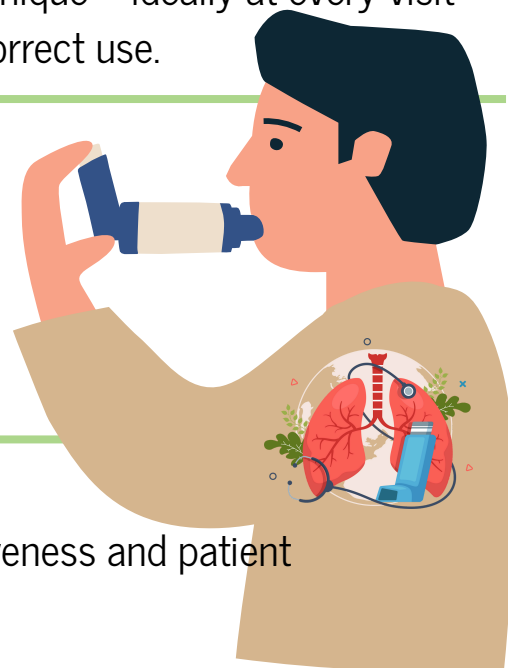
Both **GINA 2025** and **GOLD 2025 guidelines** stress:

- **GINA** advises that inhaler technique should be assessed and re-trained regularly, as skills decline over time, with patient demonstrations at every opportunity.
- **GOLD** recommends regularly checking inhaler technique—ideally at every visit—and providing hands-on device training to ensure correct use.



Common Inhaler Errors to Watch For

- Not exhaling fully before use
- Poor coordination of actuation and inhalation
- Not holding breath after inhalation
- Incorrect device assembly or maintenance



Low-Cost, High-Impact Fix

Improving inhaler technique boosts medication effectiveness and patient outcomes — for both **asthma** and **COPD**.

- Inhaler Education Toolkit – INHALE
 - Offers guidance and materials to support patient inhaler training.
- MDC Data Dashboard
 - Provides patient-level data to identify those who have not received inhaler education.
 - Click on the “NO” portion of the Maintenance Inhaler measure (not linked to Performance) and find your list of BCBSM patients that have one or more of the following: 2 or more OCS fills, one ED visits and/or one hospitalization in the measurement period. Per guidelines, these patients should be prescribed a maintenance inhaler. You can use the utilization (ED and hospitalization) and OCS Fills patient lists to see details.
 - Click on the Inhaler Education bar and see which patients have not received inhaler education (billed) in the measurement period.

Even small improvements in patient inhaler technique can lead to big gains in control, fewer exacerbations, and better quality of life.

PAB Highlight-Stephanie Fuller

In May 2025, INHALE Patient Advisor Stephanie Fuller traveled to Washington DC to participate in the Allergy and Asthma Network's (AAN) Advocacy Day. Stephanie applied for and received a scholarship to travel to Advocacy Day and prepared for her meetings at a training session. Upon arriving at the hill, Stephanie met with Michigan legislators including Representative Rashida Talib from Stephanie's district, Representative Debbie Dingell, and aides from Senator Elissa Slotkin's office. Bills and funding that Stephanie advocated for included:

- Reinstating the National Asthma Control Program at the Centers for Disease Control
- Strong appropriations for NIH asthma and allergy research initiatives
- Smoke and Heat Ready Communities Act (S341/HR903)
- One School One Nurse Act (HR 305)
- Protecting Children with Food Allergies (S1469)
- HELP Copays Act (S864)
- Chronic Disease Flexible Coverage Act (HR 919)



Stephanie has been asked to return to testify at the State level with her experience of losing family members to asthma and her experience with asthma treatments on her health.

Lung Learning Lab On-Demand Recordings

Be sure to check out the INHALEarning platform to view Lung Learning Labs (L3s) sessions on-demand at your convenience. Watching one Lung Learning Lab and completing the attendance form is a requirement for the 2026 VBR cycle. You may watch any L3 listed on the platform to receive credit.

2026 VBR Highlights include:

- Dr. Wassim Labaki: Personalizing COPD Care: The Role of Phenotypes to Guide Advanced Therapy Selection
- Wendy Wright, DNP: Asthma Management: Innovating to Improve Care
- Dr. Meilan Han: Burden of Early COPD
- Dr. Paul O'Byrne: Asthma Exacerbations and Their Prevention
- Dr. Toby Lewis: All that Wheezes is Not Asthma (Pediatric Focused)

WATCH NOW



Fall Regional Meetings



We are looking forward to seeing you at our Fall Regional Meetings. These sessions are important for your 2027 VBR/Scorecards, offer professional development opportunities (CME), and provide a venue for sharing updates critical to our program.

Attendance is mandatory for all Practice Clinical Champions.

If you are unable to attend, you must arrange for a proxy to represent your practice.

Please note: If you have previously sent a proxy to a past Regional, you are required to attend in person this time and are not eligible to send a proxy again.

Regional Dates and Locations:

- **Monday, September 8:** Schoolcraft/VistaTech - Livonia
 - Registration closes Friday, August 22, 2025
- **Thursday, September 18:** LCC/downtown campus - Lansing ***PEDIATRIC FOCUSED***
 - Registration closes Monday, August 18, 2025
- **Tuesday, September 23:** Calvin University - Grand Rapids
 - Registration closes Friday, August 22, 2025
- **Tuesday, September 30:** Genesys Banquet Center - Grand Blanc
 - Registration closes Friday, September 12, 2025
- **Wednesday, October 8:** Hagerty Center - Traverse City
 - Registration closes Monday, August 25, 2025
- **Thursday, October 16:** Oakland University - Rochester
 - Registration closes Monday, September 29, 2025

Schedule for Each Regional:

- Registration & Dinner: 5:30 - 6:00 pm
- Meeting: 6:00 - 8:00 pm

Please be sure to register before your location's deadline. **Detailed agendas and venue information will be sent to registrants after registration closes.** If you have questions regarding attendance or proxy policies, please reach out to the event coordinator.

We look forward to your participation!

REGISTER HERE



AirDuo RespiClick Discontinued

As of July 2025, Teva discontinued the distribution of AirDuo RespiClick (fluticasone propionate and salmeterol) Inhalation Powder in the US. Teva will no longer be selling to wholesalers, but inventory can continue to be purchased and used until inventory is exhausted for patients and Healthcare Providers.

Read the notice [here](#) 

Resources available:

- Ask the Pharmacist
 - Request a consult [here](#)
- MMIT Formulary App
 - Download [here](#)

AirDuo RespiClick



Health Equity Corner

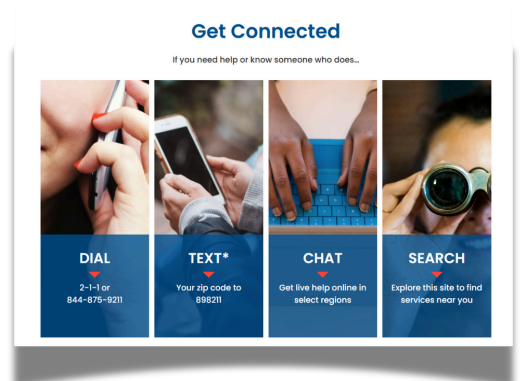
Michigan 2-1-1

Patients in need of social services such as transportation, housing, food, can contact Michigan 2-1-1. Michigan 2-1-1 is a free service that connects Michigan residents with help and answers from thousands of health and human services agencies and resources right in their communities - quickly, easily, and confidentially.

Patients can call 2-1-1 from their phone, text their zip code to 898211, or chat on the Michigan 2-1-1 website and be connected to one of the 7 regional centers in their area.

Find out more at the [Michigan 2-1-1 website](#).

211



@inhale-cqi.bsky.social



@inhale_cqi



@INHALE.CQI



inhalecqi.org



inhale-support@med.umich.edu



INHALE
Inspiring Health Advances in Lung Care